

# ConneXVUE Network Explorer

## Visualization and Monitoring of the Plant Network

### Summary

ConneXVUE  
detects and monitors  
Network Infrastructure:

- Discovers and visualizes topological network layout
- Provides a live view of the network
- Monitors traffic & reports interruptions
- Provides real time performance analytics
- Documents the system, all connections and events
  
- Wonderware Plugin for
  - ✓ Displays
  - ✓ Alarms & Events

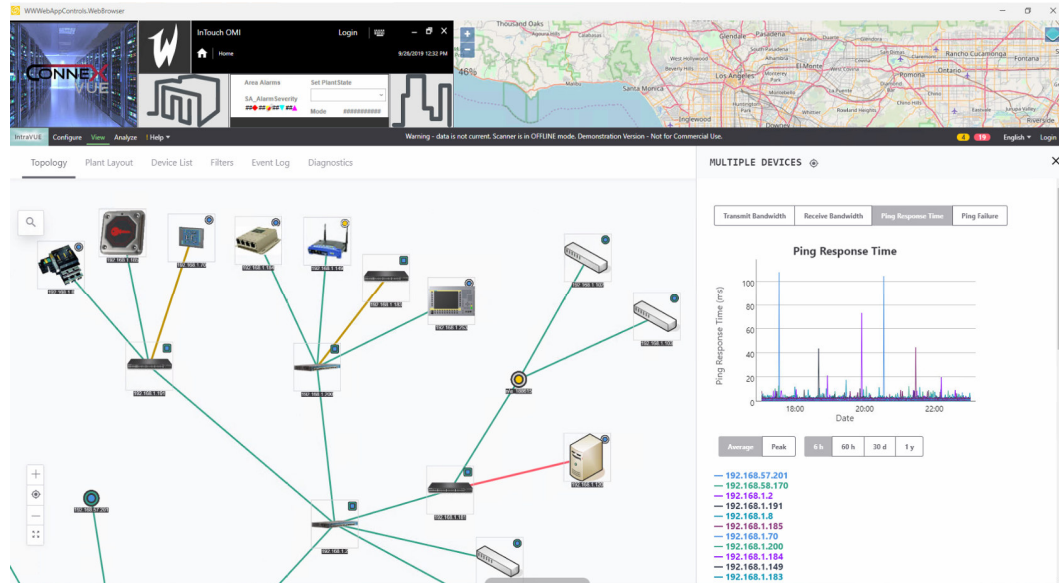
ConneXSoft Inc  
1434 Vintage LN  
Naples, FL, 34104, USA  
Phone: +1 508 315 7231

ConneXSoft GmbH  
Lohenstrasse 4  
D- 82166 Graefelfing  
Germany  
Phone: +49 89 9589900

info@ConneXSoft.com  
www.ConneXSoft.com

**DATASHEET**

*ConneXVUE, the Network Guard,  
delivers control of the Network behind the Supervisory Control System*



### Features and Benefits

#### Automatic Discovery and Monitoring of connected devices

- ConneXVUE automatically discovers all devices on the network and identifies and tracks changes
- ConneXVUE provides detailed diagnostic reports for problem identification and to prevent costly downtime

#### Graphical Visualization into all levels of devices

- ConneXVUE automatically detects Ethernet-IP type connected devices and assembles data into a topological network infrastructure tree map.
- ConneXVUE continuously collects data and presents in a format that exposes issues before they become problems
- ConneXVUE identifies and displays ring topologies.

#### Event Logs, Trend Graphs, Documentation features

- Event log contains critical information about operations in the network, new devices joining, disconnections, change of locations or configuration. Filters provide fast analysis of the data by specific criteria and topological navigation.
- Trend diagrams display limits and threshold values to detect and follow deviations from optimized system behaviour
- ConneXVUE generates a complete map of your network connections for printout and stores copies in the database for version control